



Material: Polished Stainless Steel

CLAUDIA® INOX

POLISHED STAINLESS STEEL

Claudia Inox is the name of one of the most emoting radiator where handcraft and design creates a warmth and cosy atmosphere. The highly-successful peculiarities of the Claudia can be also appreciated in this model, totally made in stainless steel.



P. max: 8 bar	Available for central heating systems • Dual energy see page 128
T. max: 95 °C	
Connections: 4 x 1/2" gas	

Material:

- Vertical collectors in polished stainless steel 30x40 mm
- Horizontal heating elements in polished stainless steel with ø of 25 mm.

Fixing kit:

- Brackets
- Air vent
- Blind
- Hexagonal tool
- Plugs and screws for mounting suitable for use on compact or hollow brick walls
- User notice

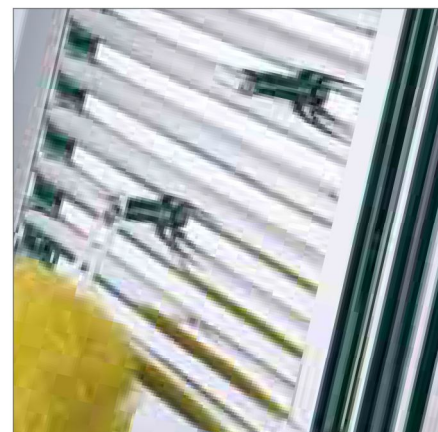
Packaging:

The radiator is protected by a recycle film in polyethylene and with a box in recycle carton. User notice included.

Features:

It is totally made in stainless steel with an unalterable finishing guaranteed during the years.

Accessories and spare parts:
See page 121



ACCESSORIES

	<p>KIT 2 HOOKS POLISHED STAINLESS STEEL CR</p> <p>Price € 88,50 Art. Nr. 5991990010035</p>
--	--

	<p>ELEGANT SQUARE VALVE KIT WITH THERMOSTATIC HEAD</p>
--	--

	<p>ELEGANT SQUARE MANUAL VALVE KIT</p>
--	--

	<p>STRAIGHT HANGER POLISHED STAINLESS STEEL SVR (L= 350 mm)</p> <p>Price € 105,50 Art. Nr. 5991990010039</p>
--	--

POLISHED

C	Art. Nr.	M	Art. Nr.
Ø 10/12/14/15/16	5991990301026	Ø 14/16/18	5991990301025
Price € 168,00		Price € 165,00	
C = Copper connection • M = Multilayer connection			

SATIN

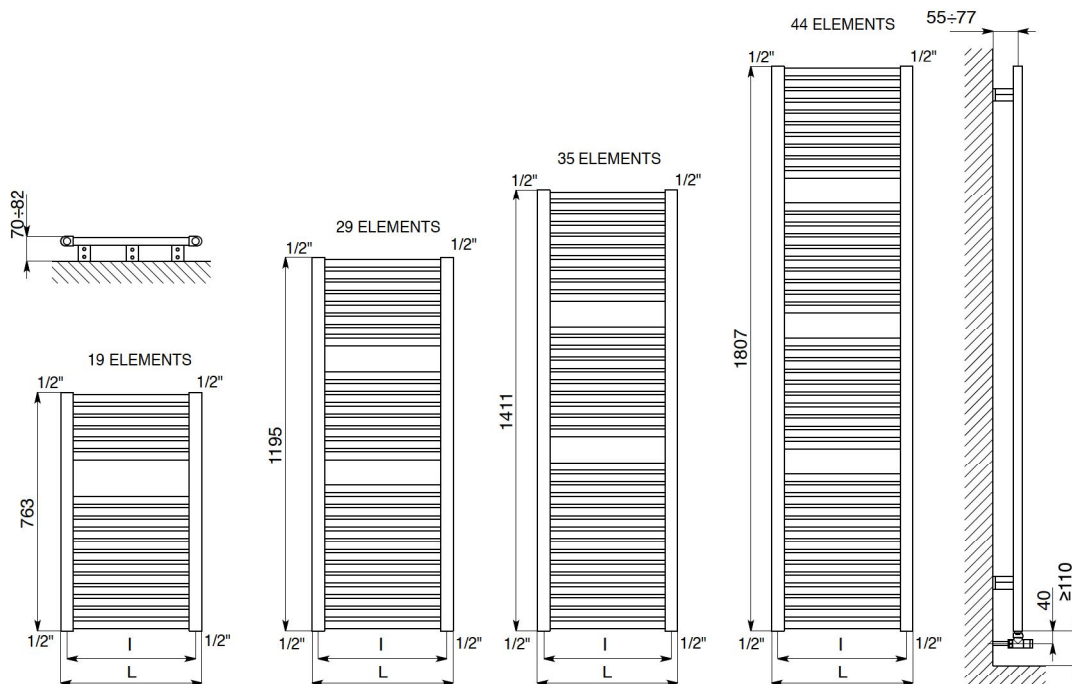
C	Art. Nr.	M	Art. Nr.
Ø 10/12/14/15/16	5991990321012	Ø 14/16/18	5991990321011
Price € 206,50		Price € 201,50	
C = Copper connection • M = Multilayer connection			

POLISHED

C	Art. Nr.	M	Art. Nr.
Ø 10/12/14/15/16	5991990301012	Ø 14/16/18	5991990301011
Price € 106,50		Price € 104,50	
C = Copper connection • M = Multilayer connection			

SATIN

C	Art. Nr.	M	Art. Nr.
Ø 10/12/14/15/16	5991990321014	Ø 14/16/18	5991990321013
Price € 124,50		Price € 119,00	
C = Copper connection • M = Multilayer connection			



Art. Nr.	Height	Lenght	Price	Centres	Weight	Capacity	Thermal output $\Delta t = 50^{\circ}\text{C}$		75/65/20 $^{\circ}\text{C}$ ($\Delta t = 50^{\circ}\text{C}$)
	[mm]	L [mm]					Watt	Kcal/h	⁽⁴⁾ Thermal output ϕ in Watt and Δt in $^{\circ}\text{C}$
3551340130001	763	450	526,00	400	6,7	4,2	250	215	$\phi = 1,9947 * \Delta t^{1,2349}$
3551340130004		500	553,00	450	7,4	4,6	274	236	$\phi = 2,1854 * \Delta t^{1,2350}$
3551340130011		600	600,00	550	8,5	5,0	322	277	$\phi = 2,5652 * \Delta t^{1,2353}$
3551340130002	1195	450	747,00	400	10,5	6,3	360	310	$\phi = 2,5633 * \Delta t^{1,2840}$
3551340130005		500	753,00	450	11,5	7,1	398	342	$\phi = 2,8517 * \Delta t^{1,2824}$
3551340130012		600	831,00	550	13,5	8,0	473	407	$\phi = 3,4184 * \Delta t^{1,2802}$
3551340130023	1411	450	882,00	400	12,3	7,5	431	371	$\phi = 1,8669 * \Delta t^{1,2814}$
3551340130006		500	916,00	450	13,5	8,4	477	410	$\phi = 3,2041 * \Delta t^{1,2780}$
3551340130013		600	1.013,00	550	15,9	9,4	570	490	$\phi = 3,8861 * \Delta t^{1,2751}$
3551340130003	1807	450	1.073,00	400	15,5	9,4	547	470	$\phi = 3,2841 * \Delta t^{1,3076}$
3551340130007		500	1.121,00	450	17,4	10,6	607	522	$\phi = 3,7018 * \Delta t^{1,3036}$
3551340130014		600	1.218,00	550	20,5	12,3	727	625	$\phi = 4,5425 * \Delta t^{1,2974}$

⁽⁴⁾ For output at different Δt than 50°C , see page 130

FLOOR FIXING KIT

- Kit includes:
- 1 polished RDT-FLOOR joints in different heights
 - 2 polished RDT-WALL joints
 - Fixing plugs

Art. Nr. 5102000300001
H 96 mm.
Price € 178,00

Art. Nr. 5102000300002
H 146 mm.
Price € 179,00

Art. Nr. 5102000300003
H 196 mm.
Price € 180,00

