



Material: Polished Stainless Steel

KELLY

POLISHED STAINLESS STEEL

Minimal shapes for this new model in polished stainless steel. Two vertical collectors supporting the horizontal tubes acting as useful towel hangers. Quality of finishing gives to this model elegance and refinement.



P. max: 8 bar	Available for central heating systems
T. max: 95 °C	
Connections: 4 x 1/2" gas	

Material:

- Vertical collectors in polished stainless steel with \varnothing of 38 mm.
- Horizontal heating elements in polished stainless steel with \varnothing of 18 mm.

Fixing kit:

- Brackets
- Air vent
- Hexagonal tool
- Plugs and screws for mounting suitable for use on compact or hollow brick walls
- User notice

Packaging:

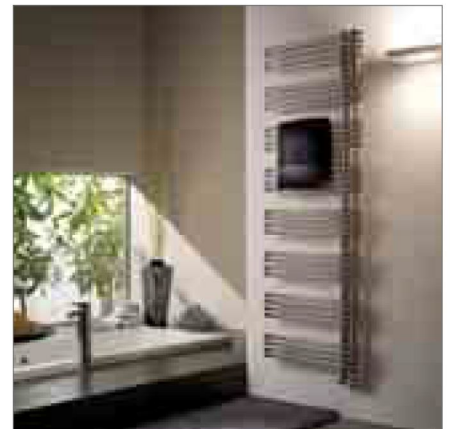
The radiator is protected by a recycle film in polyethylene and with a box in recycle carton. User notice included.

Features:

It is totally made in stainless steel with an unalterable finishing guaranteed during the years.

Accessories and spare parts:

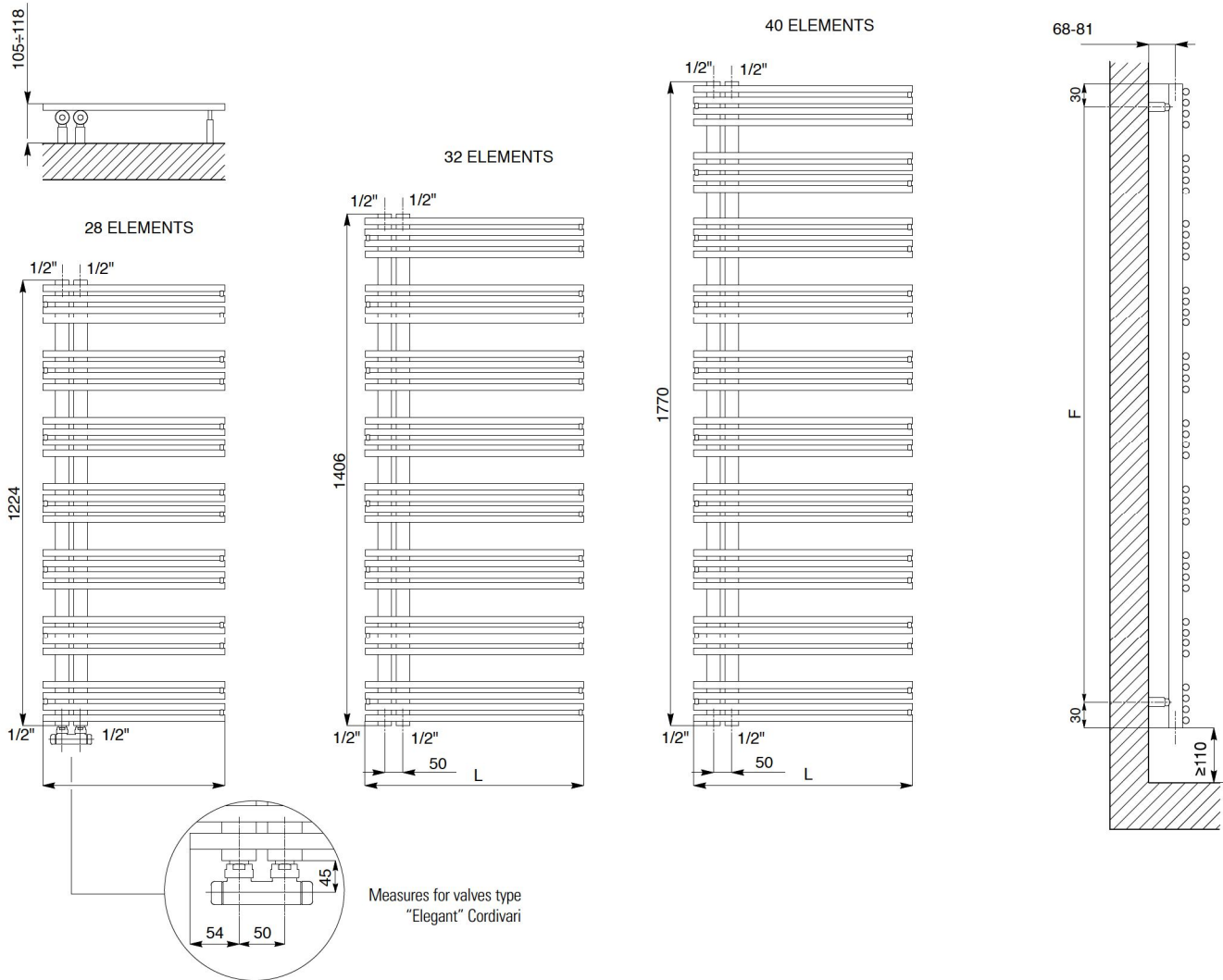
See page 121



Kelly radiator can have a 180° rotation and can be installed following customer's design need.

UPSIDE DOWN



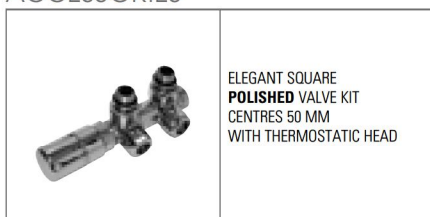


Art. Nr.	Height	Lenght L [mm]	Price €	Centres l [mm]	Fixing kit centres		Weight [Kg]	Capacity [lt]	Thermal output $\Delta t = 50^\circ\text{C}$		75/65/20°C ($\Delta t=50^\circ\text{C}$)
	[mm]				F [mm]	Watt			Kcal/h	⁽⁴⁾ Thermal output ϕ in Watt and Δt in °C	
3551780400101	1224	500	730,00	50	1164	10,1	4,5	441	379	$\phi = 2,8576 * \Delta t^{1,2881}$	
3551780400111		600	880,00	50	1164	11,4	4,6	512	440	$\phi = 3,3568 * \Delta t^{1,2851}$	
3551780400102	1406	500	860,00	50	1346	11,3	5,2	496	427	$\phi = 3,4611 * \Delta t^{1,2892}$	
3551780400112		600	1.030,00	50	1346	12,9	5,4	594	511	$\phi = 3,8777 * \Delta t^{1,2862}$	
3551780400103	1770	500	1.120,00	50	1710	14,4	6,4	634	545	$\phi = 3,9367 * \Delta t^{1,2999}$	
3551780400113		600	1.238,00	50	1710	16,3	7,0	738	635	$\phi = 4,8746 * \Delta t^{1,2832}$	

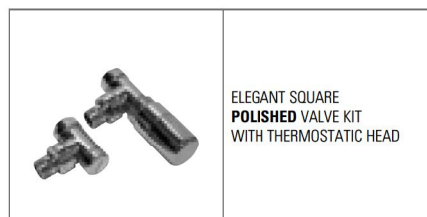
⁽⁴⁾ For output at different Δt than 50°C , see page 130

ACCESSORIES

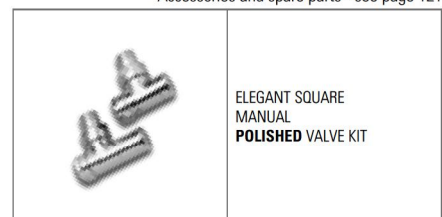
Accessories and spare parts - see page 121



C	Art. Nr.	M	Art. Nr.
Ø 10/12/14/15/16	5991990301040	Ø 14/16/18	5991990301039
Price € 190,00		Price € 185,00	
C = Copper connection • M = Multilayer connection			



C	Art. Nr.	M	Art. Nr.
Ø 10/12/14/15/16	5991990301026	Ø 14/16/18	5991990301025
Price € 168,00		Price € 165,00	
C = Copper connection • M = Multilayer connection			



C	Art. Nr.	M	Art. Nr.
Ø 10/12/14/15/16	5991990301012	Ø 14/16/18	5991990301011
Price € 106,50		Price € 104,50	
C = Copper connection • M = Multilayer connection			